

Reducing Greenhouse Gas Emissions



Our AWI Incineration Technology

converts 99.99% of the methane to CO₂ & H₂O. The Global Warming Potential of methane is over 20 times higher than CO₂. Inefficient combustion of welltest gases with a flare or enclosed flaring system will significantly increase the Greenhouse gases emitted.

The AWI system provides industry leading dispersion of the combustion products due to the high operating temperatures, increased stack velocities with the forced draft system and the 40 ft exit elevation.

For example 19,000 SCFD of waste methane gas can generate the equivalent of the following daily CO₂ emissions...

	Tonne/Day	Tonne/year
* Vented	7.6	2,775
* 65% combustion efficiency (Flare)	3.3	1,205
* 80% combustion efficiency (Enclosed Flare)	2.3	840
* AWI Incineration (99.99% Combustion Efficiency)	1.0	365

AWI Incineration converts 99.99% of the methane to CO₂ and H₂O



Compared to flaring, the AWI technology offers:

- Combustion Efficiency of 99.99% , with improved air quality and reduced Greenhouse Gas Emissions
- Stable, consistent combustion in an enclosed and lined chamber, unaffected by winds
- No ground disturbance, free standing, no smoke, no visible flame, no odor
- No heat radiation at ground level for improved protection of arctic/tundra or sensitive environments, personnel and equipment
- 40 ft long x 11' 6" wide x 16,500 Kg - Oversized Load Permits are Not required - no pilot trucks
- Rated Capacity at 7 MM SCFD Methane or 3 MM SCFD Typical Well Gas. Higher flow rates are supported by the integral Bypass Flare
- Uses significantly less fuel than a flare to efficiently incinerate low heat content gases (H₂S) with 99.99% Combustion Efficiency
- Compliance with AER Directive 60
 - 40 ft Exit Elevation
 - Dual Continuous Pilots
 - Continuous Temperature Monitoring and Recording
 - Ability to maintain 600C for H₂S Incineration, eliminating or reducing additional fuel requirements

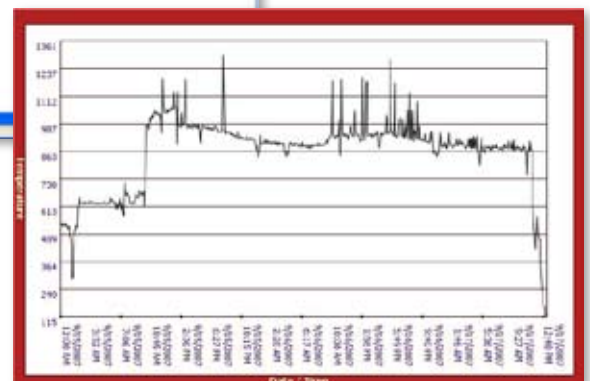
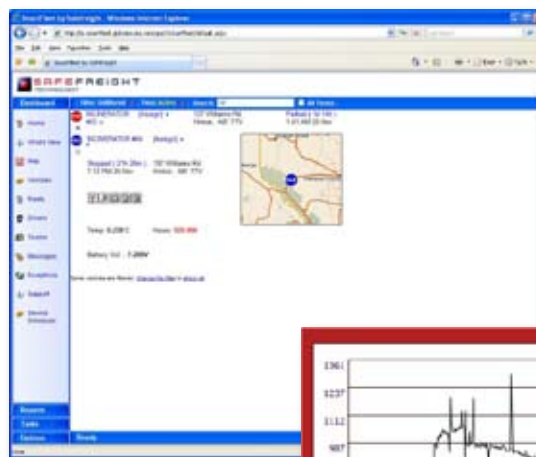
Setup is simple & completed in minutes:

L Skid mounted for ease of loading, erection and transportation. Installation is completed in minutes, with no guy wires required and zero ground disturbance.

- **Step 1** – Unload & Stand in Place, no guy wires
- **Step 2** – Tie in gas line(s)
- **Step 3** – Hook up Generator
- **Step 4** – Open Pilot Fuel Valve & Push Start Button

Continuous Temperature Monitoring and Recording for H₂S Applications

The AWI control system includes instantaneous online temperature monitoring and recording via our onboard communications module. Clients can access the temperature data via discreet password and monitor realtime temperatures as the equipment is working...from any computer with simple internet access. Whether you're in Calgary or Ft. St. John, you can monitor the progress of the welltest via the online temperature of the incinerator. The AWI systems meets the AER Directive 60 requirements for Temperature Monitoring and Recording.



Simple automated control system, easy to use and safe to operate.

www.awincinerators.com

P.O. Box 447 • Whitecourt • Alberta • T7S 1N5

Email • sales@awincinerators.com

24 Hour Call (780) 778-0960

Toll Free 1-888-778-0960

Fax (780) 778-6998

